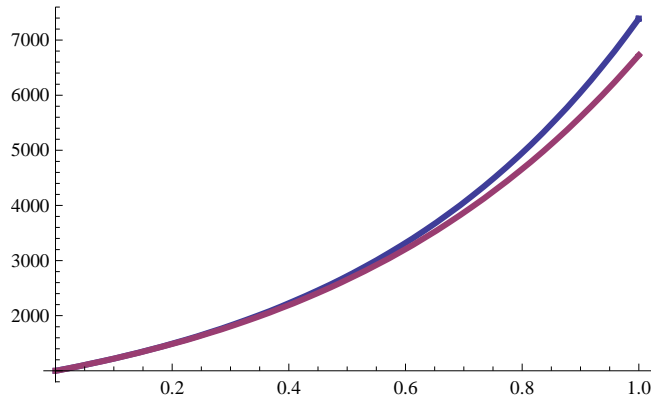


Wachstum einer Population gemäß der DGL  $p'(t) = a p(t)$

a) konstante Wachstumskonstante  $a = 2$  : p1, blaue Kurve

b) variable Wachstums"konstante"  $a = 2/(1+0.1 t)$  : p2, rote Kurve

```
Plot[{p1[t], p2[t]}, {t, 0, 1}, PlotRange -> All, PlotStyle -> {Thickness[0.01]}]
```



```
Plot[{p1[t], p2[t]}, {t, 0, 3}, PlotRange -> All, PlotStyle -> {Thickness[0.01]}]
```

